

Town of Oldenburg

Oldenburg Utility Services works vigilantly to provide a reliable, plentiful supply of safe drinking water every day. This annual drinking water quality report is designed to show Oldenburg customers how successfully that goal was achieved during 2022. Oldenburg's record is one that reflects the commitment of our Town to provide safe, healthy water for the community in which they also live. This report meets the federal Safe Drinking Water Act (SDWA) requirement for Consumer Confidence Reports and contains information on the source of our water, its quality and the health risks associated with any contaminants in our water. Safe water is vital to our community. Please read this report carefully and, if you have questions, call the numbers listed in this report.

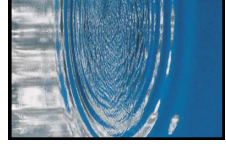
The source of Oldenburg's drinking water is purchased from Batesville Water & Gas Utility. The source of the water comes from six municipal reservoirs. Water is pumped from these reservoirs and treated to remove contaminants and protect the public.

To protect this source from potential contamination, Batesville has developed a wellhead protection plan. This community-based plan helps protect our source of drinking water through a program of pollution prevention. Watch for information and updates regarding this program.

Sources of drinking water (both tap and bottled water) include rivers, lakes, streams, ponds, reservoirs, springs and wells. As water travels over the surface of the land or through the ground, it dissolves naturally occurring minerals and in some cases, radioactive material, and can pick up substances resulting from the presence of animals or from human activity.

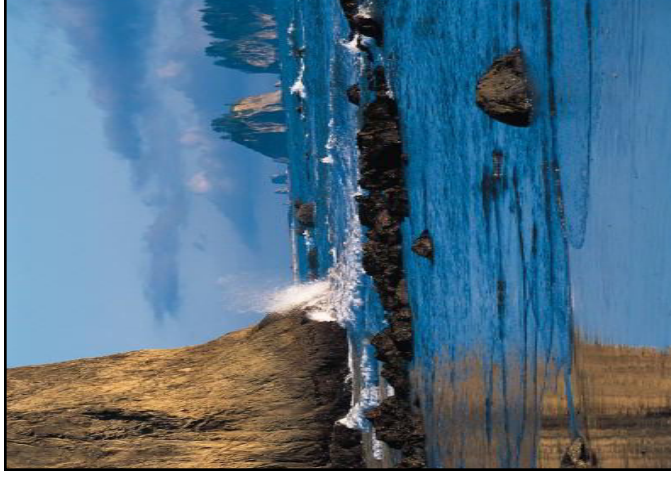
Contaminants that may be present in source water include:

- Microbial contaminants, such as viruses and bacteria, which may come from sewage treatment plants, septic systems, agricultural livestock operations, and wildlife.
- Inorganic contaminants such as salts and metals which can be naturally-occurring or result from urban storm water runoff, industrial or domestic wastewater discharges, oil and gas production, mining or farming.
- Pesticides and herbicides, which may come from a variety of sources such as agriculture, storm water runoff, and residential uses.
- Organic chemicals, including synthetic and volatile organic chemicals, which are byproducts of industrial processes and petroleum production and can also come from gas stations, urban storm water runoff, and septic systems.
- Radioactive materials, which can be naturally occurring or be the result of oil and gas production and mining activities.



Oldenburg

2022 Annual Consumer Confidence Report



Town of Oldenburg

Tel: (812) 932-1922

PRE-SORTED
STANDARD
U.S. POSTAGE
PAID
Oldenburg
47036
PERMIT NO. 116

Oldenburg Utility Services
P.O. Box 116
Oldenburg, IN 47036

Oldenburg Utilities routinely monitors for constituents in your drinking water according to all Federal and State laws. The following table provides the results for those constituents that were detected as part of our 2022 monitoring.

Drinking water, including bottled water, may reasonably be expected to contain at least small amounts of some contaminants. The presence of contaminants does not necessarily indicate that the water poses a health risk. More information about contaminants and potential health effects can be obtained by calling the **Environmental Protection Agency's Safe Drinking Water Hotline** at (800) 426-4791.

Some people may be more vulnerable to contaminants in drinking water than the general population. Immunocompromised persons such as persons with cancer undergoing chemotherapy, persons who have undergone organ transplants, people with HIV/AIDS or other immune system disorders, some elderly, and infants can be particularly at risk from infections. These people should seek advice about drinking water from their health care providers. EPA/CDC guidelines on appropriate means to lessen the risk of infection by cryptosporidium and other microbiological contaminants are available from the **Safe Drinking Water Hotline (800-426-4791)**.

We want our valued customers to be informed about their water utility. If you have any questions about this report, concerning your water utility, or if you would like information regarding boil water advisories visit our website at www.cityofoldenburg.com or the wellhead protection program, please contact Leslie Day at (765) 993-3978. If you want to learn more, you are welcome to attend any of our regularly scheduled Utility Board meetings held at 7:30 PM on the third Tuesday of each month.

Lead: If present, elevated levels of lead can cause serious health problems, especially for pregnant women and young children. Lead in drinking water is primarily from materials and components associated with service lines and home plumbing. Oldenburg Utilities is responsible for providing high quality drinking water, but cannot control the variety of materials used in plumbing. When your water has been sitting for several hours, you can minimize the exposure by flushing your tap for 1 to 2 minutes prior to drinking or cooking. If you are concerned about lead in your drinking water, have it tested. Information is available at the **Safe Drinking Water Hotline** at (800)426-4791 or at www.epa.gov/safewater/lead.

All of us at Oldenburg work diligently every day to provide top quality water to every tap. We ask that our customers help us protect our water sources, which are the heart of our community, our way of life and our children's future. **We failed to submit results or report a failure to test our drinking water in a timely manner**

Parameter B = Batesville O = Oldenburg	Violation Yes / No	Maximum Level Detected B=Batesville O=Oldenburg	Unit of Measure	MCL G	MCL	Likely Source of Substance in Drinking Water
<u>Inorganic Constituents</u>						
Chlorine O = 2022	No	O = 1.00	PPM	4	4	Erosion of natural deposits.
Copper B = 2021 O = 2021	No	B =.337 O =.146 ⁽¹⁾	PPM	1.3	AL=.1.3	Corrosion of household plumbing systems; erosion of natural deposits.
Lead B =2021 O = 2021	No	B = 2.04 O = 2.1 ¹⁾	PPB	0	AL-.015	Corrosion of household plumbing systems; erosion of natural deposits.
Arsenic B = 2017	No	B = 1.1 ⁽²⁾	PPM	4	4	Water additive, which promotes strong teeth.
Nitrate-N B = 2022 O = 2022	No	B = 2.13 O = .35	PPM	10	10	Runoff from fertilizer use; erosion of natural deposits.
Fluoride B = 2022	No	.69	PPM	N/A	N/A	Erosion of natural deposits.
Total Organic Carbon % removal al B = 2021	No	66.6%	%	N/A	N/A	Naturally Present in the Environment
Barium 2019	No	.067	ppm	2	2	Discharge of drilling wastes: Discharge form metal refiners; Erosion of natural deposits.
<u>Volatile Organic Constituents</u> Gross alpha excluding radon and uranium. B= 2020	No	6.1	pCi/L	0	1.5	
Total (HAA5) = 2022	No	B = 11.0 O = 16.7	ppb	N/A	60 ppb	By-product of drinking water chlorination.
(TTHM) = 2022	No	B = 21.0 O = 19.6	ppb	N/A	80 ppb	By-product of drinking water chlorination.

(1) 2021 Level reported for Copper and Lead represents the 90th percentile value as calculated from a total of 20 samples

⁽²⁾ - Levels of Fluoride detected range from .7– 1.5 PPM.
All other tested contaminants were below detection limits.
All analyses performed in 2017, 2019,2021,2022 The state allows us to monitor for some contaminants less than once per year because the concentrations of these contaminants do not change frequently. Therefore, some of the data while representative, is more than one year old.

Included in the table above, you will find terms and abbreviations you might not be familiar with. To help you better understand these terms we've provided the following definitions:

Not Applicable (N/A) - no MCLG or MCL had been established for these unregulated constituents.

Parts per million (PPM) - one part per million corresponds to one minute in two years or a single penny in \$10,000.

Parts per billion (PPB) - one part per billion corresponds to one minute in two thousand years or a single penny in \$10,000,000.

Action Level (AL) - the concentration of a contaminant which, if exceeded, triggers treatment or other requirements which there is no known or expected risk to health. MCLG's allow for a margin of safety.

Maximum Contaminant Level Goal (MCLG) - The "Goal" (MCLG) is the level of a contaminant in drinking water below which there is no known or expected risk to health. MCLG's allow for a margin of safety.

Maximum Contaminant Level (MCL) - The "Maximum Allowed" (MCL) is the highest level of a contaminant that is allowed in drinking water. MCL's are set as close to the MCLG's as feasible using the best available treatment technology. To understand the possible health effects described for many regulated constituents, a person would have to drink 2 liters of water every day at the MCL level for a lifetime to have a one-in-a-million chance of having the health effect.

Maximum Contaminant Level Goal (MCLG) - The "Goal" (MCLG) is the level of a contaminant in drinking water below which there is no known or expected risk to health. MCLG's allow for a margin of safety.